



HSBPVT'S GOI


Faculty of Engineering

NAAC Criteria IV

4.1.1: Availability of adequate infrastructure and physical facilities viz., Classrooms, laboratories, ICT facilities, cultural activities, gymnasium, yoga Center etc. in the institution

Sr. No.	Details	Page No.
1.	Summary of physical facilities with their details	01
2.	Geotag photographs	06




PRINCIPAL
H.S.B.P.V.T.'S GROUP OF INSTITUTION'S
PARIKRAMA COE KASHTI



Hon. Shri. Babanrao Pachpute Vichardhara Trust's
Group of Institutions

Kashti, Tal - Shrigonda, Dist-Ahmednagar, Maharashtra - 414 701

Faculty of Engineering

Approved by AICTE, MS (New-Int)-Engg./2009/09, Dt. 15/06/09, Affiliated to Savitribai Phule Pune University

4.1.1 Availability of adequate infrastructure and physical facilities viz., Classrooms, laboratories, ICT facilities, cultural activities, gymnasium, yoga Center etc. in the institution

SUMMARY OF PHYSICAL FACILITIES

Sr.No.	Particulars	Numbers	Area in Sq.M
1	Classrooms	15	1303.08
2	Tutorial Room	05	255.60
3	Laboratories	35	3136
4	Workshop	1	200
5	Additional Workshop	1	400
6	Central Library	1	516
7	Computer center	1	150
8	Seminar halls	1	194.25
9	Drawing Hall	1	194.25
10	Training and placement Cell	1	82.08
11	IQAC Cell	1	88.66
12	EDC Cell	1	30
13	Exam Control Room	1	51.12
14	Strong Room	1	24.09
14	NSS Room	1	24.09
15	Girls Common Room	1	51.12
16	Boys Common Room	1	51.12
17	Gymnasium	1	66
18	Yoga Center	1	66
19	Sports Room	1	66



Wetif
PRINCIPAL
H.S.B.P.V.T.'S GROUP OF INSTITUTION'S
PARIKRAMA COE KASHTI



CLASSROOMS

Sr. No.	Floor	Room No	Department	Area in Sq.M
1	Ground	36	Mechanical	87.23
2	Ground	37	Mechanical	87.23
3	Ground	38	Mechanical	87.23
4	First	62	E&Tc	87.23
5	First	63	E&Tc	87.23
6	First	64	E&Tc	87.23
7	First	68	Civil	87.23
8	First	69	Civil	87.23
9	First	70	Civil	87.23
10	Third	92	Electrical	87.23
11	Third	93	Electrical	87.23
12	Third	94	Electrical	87.23
13	Third	98	Computer	87.23
14	Third	99	Computer	87.23
15	Third	100	Computer	87.23

TUTORIAL ROOM

Sr. No.	Floor	Room No	Department	Area in Sq.M
1	Ground	39	Mechanical	51.12
2	First	65	E & Tc	51.12
3	First	71	Civil	51.12
4	Third	101	Electrical	51.12
5	Third	107	Computer	51.12



Wetif
PRINCIPAL
H.S.B.P.V.T.'S GROUP OF INSTITUTION'S
PARIKRAMA COE KASHTI



Hon. Shri. Babanrao Pachpute Vichardhara Trust's
Group of Institutions

Kashti, Tal - Shrigonda, Dist-Ahmednagar, Maharashtra - 414 701

Faculty of Engineering

Approved by AICTE, MS (New-Int)-Engg./2009/09, Dt. 15/06/09, Affiliated to Savitribai Phule Pune University

LABORATORIES

Sr. No.	Floor	Room No	Department	Area in Sq.M
1	Ground	11-A	Electrical	76.68
2	Ground	11-B	Electrical	76.68
3	Ground	12	Electrical	76.68
4	Ground	35-A	Mechanical	78.33
5	Ground	43	Mechanical	87.48
6	Ground	44	Mechanical	87.48
7	Ground	45	Mechanical	86.66
8	Ground	49-B	Mechanical	75.81
9	Ground	35-B	Civil	78.33
10	Ground	49-A	Civil	66.75
11	Ground	50	Civil	86.87
12	Ground	51	Civil	86.87
13	Ground	52	Civil	86.87
14	Ground	53	Civil	51.12
15	First	55-A	E & Tc	75.60
16	First	55-B	E & Tc	75.60
17	First	56	E & Tc	86.87
18	First	57	E & Tc	86.87
19	First	58	E & Tc	86.87
20	First	61-A	E & Tc	78.75
21	First	61-B	E & Tc	78.75
22	First	67-A	Physics	66.75
23	First	67-B	Chemistry	75.81
24	First	14-A	Computer	94.87
25	First	14-B	Computer	94.87
26	First	22	Computer	76.46
27	First	21	Computer	76.46
28	First	20-A	Computer	68.04
29	First	20-B	Computer	68.04
30	Second	85-B	Mechanical	75.81
31	Second	85-A	Electrical	66.75
32	Third	97-A	Electrical	68.97
33	Third	97-B	Electrical	78.75
34	WS	23	Civil- SURVEY	66.88
35	WS	24	Civil-MOS	200



[Signature]
PRINCIPAL
 H.S.B.P.V.T.'S GROUP OF INSTITUTION'S
 PARIKRAMA COE KASHTI



Hon. Shri. Babanrao Pachpute Vichardhara Trust's
Group of Institutions

Kashti, Tal - Shrigonda, Dist-Ahmednagar, Maharashtra - 414 701

Faculty of Engineering

Approved by AICTE, MS (New-Int)-Engg./2009/09, Dt. 15/06/09, Affiliated to Savitribai Phule Pune University

SEMINAR HALLS

Sr. No.	Floor	Room No	Department	Area in Sq.M
1	Second	24	Seminar Hall	194.25

GYMNASIUM

Sr. No.	Floor	Room No	Particulars	Area in Sq.M
1	Ground	3	Gymnasium	66

YOGA CENTER

Sr. No.	Floor	Room No	Particulars	Area in Sq.M
1	Ground	5	Yoga Center	66

SPORTS ROOM

Sr. No.	Floor	Room No	Particulars	Area in Sq.M
1	Ground	4	Sports Room	66

COMPUTER CENTER

Sr. No.	Floor	Room No	Particulars	Area in Sq.M
1	First	19	Computer Centre	150



Wetif
PRINCIPAL
H.S.B.P.V.T.'S GROUP OF INSTITUTION'S
PARIKRAMA COE KASHTI



Hon. Shri. Babanrao Pachpute Vichardhara Trust's
Group of Institutions

Kashti, Tal - Shrigonda, Dist-Ahmednagar, Maharashtra - 414 701

Faculty of Engineering

Approved by AICTE, MS (New-Int)-Engg./2009/09, Dt. 15/06/09, Affiliated to Savitribai Phule Pune University

CENTRAL LIBRARY

Sr. No.	Floor	Room No	Particulars	Area in Sq.M
1	Ground	7	Library	516
2	First	17	Library	

GIRLS COMMON ROOM

Sr. No.	Floor	Room No	Particulars	Area in Sq.M
1	Second	89	Girls Common Room	51.12

BOYS COMMON ROOM

Sr. No.	Floor	Room No	Particulars	Area in Sq.M
1	Second	77	Boys Common Room	51.12

IQAC CELL

Sr. No.	Floor	Room No	Particulars	Area in Sq.M
1	Ground	01	IQAC Cell	88.66

EXAM CONTROL ROOM

Sr. No.	Floor	Room No	Particulars	Area in Sq.M
1	First	59	Examination Control Room	51.12
2	First	60	Strong Room	24.09

TRAINING AND PLACEMENT CELL

Sr. No.	Floor	Room No	Particulars	Area in Sq.M
1	Ground	4	Training & Placement Cell	82.08



Wetif
PRINCIPAL
H.S.B.P.V.T.'S GROUP OF INSTITUTION'S
PARIKRAMA COE KASHTI



Hon. Shri. Babanrao Pachpute Vichardhara Trust's
Group of Institutions

Kashti, Tal - Shrigonda, Dist-Ahmednagar, Maharashtra - 414 701

Faculty of Engineering

Approved by AICTE, MS (New-Int)-Engg./2009/09, Dt. 15/06/09, Affiliated to Savitribai Phule Pune University

COMMON FACILITY



PARIKRAMA GATE



Wati
PRINCIPAL
H.S.B.P.V.T.'S GROUP OF INSTITUTION'S
PARIKRAMA COE KASHTI



Hon. Shri. Babanrao Pachpute Vichardhara Trust's Group of Institutions

Kashti, Tal - Shrigonda, Dist-Ahmednagar, Maharashtra - 414 701

Faculty of Engineering

Approved by AICTE, MS (New-Int)-Engg./2009/09, Dt. 15/06/09, Affiliated to Savitribai Phule Pune University



Latitude: 18.522285
Longitude: 74.582074
Elevation: 544.44±31 m
Accuracy: 43.0 m
Azimuth: 280° (W)
Pitch: 0.3°
Time: 10:37

Powered by AngleCam

Parikrama Gate with Security



Latitude: 18.522382
Longitude: 74.582229
Elevation: 544.44±14 m
Accuracy: 14.6 m
Azimuth: 325° (NW)
Pitch: 0.4°
Time: 10:38

Powered by AngleCam

GATE



ENGG. BUILDING



Watil
PRINCIPAL
H.S.B.P.V.T.'S GROUP OF INSTITUTION'S
PARIKRAMA COE KASHTI



Hon. Shri. Babanrao Pachpute Vichardhara Trust's Group of Institutions

Kashti, Tal - Shrigonda, Dist-Ahmednagar, Maharashtra - 414 701

Faculty of Engineering

Approved by AICTE, MS (New-Int)-Engg./2009/09, Dt. 15/06/09, Affiliated to Savitribai Phule Pune University



ENGG. BUILDING ENTRANCE



Latitude: 18.523217
Longitude: 74.574427
Elevation: 276.84±10 m
Accuracy: 49.4 m
Azimuth: 325° (NW)
Pitch: 0.2°
Time: 10:07

Powered by AngleCam



Latitude: 18.52333
Longitude: 74.574464
Elevation: 542.14±4 m
Accuracy: 61.5 m
Azimuth: 173° (S)
Pitch: -2.2° (0.9°)
Time: 10:41
Note: Access Control

Powered by AngleCam



FACE DETECTION ATTENDANCE

Water

PRINCIPAL
H.S.B.P.V.T.'S GROUP OF INSTITUTION'S
PARIKRAMA COE KASHTI

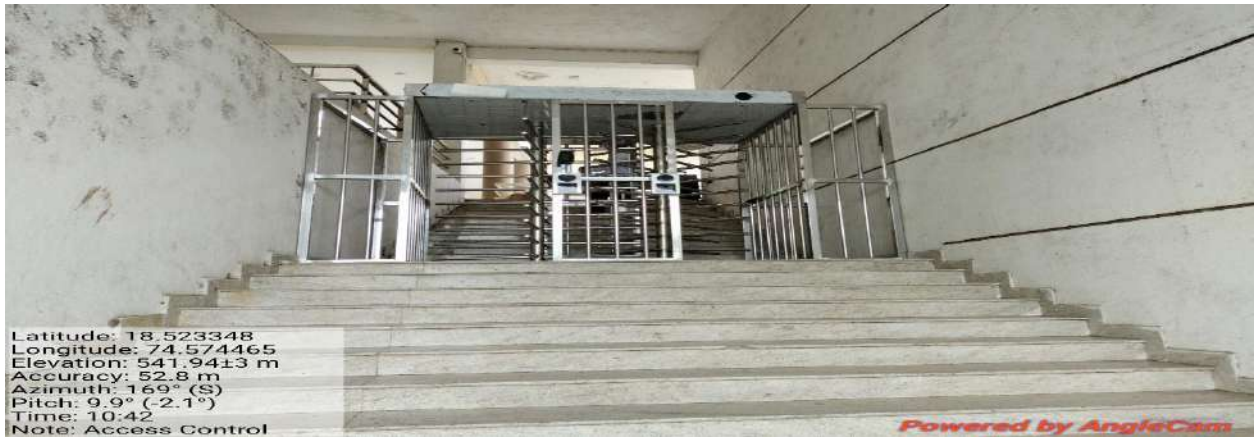


Hon. Shri. Babanrao Pachpute Vichardhara Trust's Group of Institutions

Kashti, Tal - Shrigonda, Dist-Ahmednagar, Maharashtra - 414 701

Faculty of Engineering

Approved by AICTE, MS (New-Int)-Engg./2009/09, Dt. 15/06/09, Affiliated to Savitribai Phule Pune University



Latitude: 18.523348
Longitude: 74.574465
Elevation: 541.94±3 m
Accuracy: 52.8 m
Azimuth: 169° (S)
Pitch: 9.9° (-2.1°)
Time: 10:42
Note: Access Control

Powered by AngleCam

FACE DETECTION ATTENDANCE



Latitude: 18.523125
Longitude: 74.574298
Elevation: 541.94±1 m
Accuracy: 28.6 m
Azimuth: 164° (S)
Pitch: 9.3° (-0.7°)
Time: 10:54
Note: Computer Centre

Powered by AngleCam

COMPUTER CENTRE



Latitude: 18.523124
Longitude: 74.574515
Elevation: 542.94±1 m
Accuracy: 12.9 m
Azimuth: 176° (S)
Pitch: 8.8°
Time: 10:
Note: Cent, Library

Powered by AngleCam

LIBRARY



Watil
PRINCIPAL
H.S.B.P.V.T.'S GROUP OF INSTITUTION'S
PARIKRAMA COE KASHTI



Hon. Shri. Babanrao Pachpute Vichardhara Trust's
Group of Institutions

Kashti, Tal - Shrigonda, Dist-Ahmednagar, Maharashtra - 414 701

Faculty of Engineering

Approved by AICTE, MS (New-Int)-Engg./2009/09, Dt. 15/06/09, Affiliated to Savitribai Phule Pune University



Latitude: 18.523101
 Longitude: 74.574534
 Elevation: 542.94±2 m
 Accuracy: 20.0 m
 Azimuth: 215° (SW)
 Pitch: 6.2° (-1.2°)
 Time: 10:17
 Note: Central Library

Powered by AngleCam



Latitude: 18.523103
 Longitude: 74.574539
 Elevation: 542.94±2 m
 Accuracy: 20.0 m
 Azimuth: 105° (E)
 Pitch: -10.2° (-2.5°)
 Time: 10:14
 Note: Central Library

Powered by AngleCam



Latitude: 18.523103
 Longitude: 74.574539
 Altitude: 470.5±2 m
 Accuracy: 20.0 m
 Azimuth: 304° (N)
 Pitch: -0.5° (-4.0°)
 Time: 10:16
 Note: Digital Library

Powered by AngleCam



DIGITAL LIBRARY

PRINCIPAL
 H.S.B.P.V.T.'S GROUP OF INSTITUTION'S
 PARIKRAMA COE KASHTI



Hon. Shri. Babanrao Pachpute Vichardhara Trust's Group of Institutions

Kashti, Tal - Shrigonda, Dist-Ahmednagar, Maharashtra - 414 701

Faculty of Engineering

Approved by AICTE, MS (New-Int)-Engg./2009/09, Dt. 15/06/09, Affiliated to Savitribai Phule Pune University



Latitude: 18.523102
Longitude: 74.574537
Elevation: 542.94±2 m
Accuracy: 20.0 m
Azimuth: 58° (NE)
Pitch: -10.8° (4.2°)
Time: 10:20
Note: Xerox Facility

Powered by AngleCam

XEROX FACILITY



Latitude: 18.523101
Longitude: 74.574533
Elevation: 542.94±2 m
Accuracy: 20.0 m
Azimuth: 27° (NE)
Pitch: -1.1° (2.1°)
Time: 10:24
Note: Engineering Journals

Powered by AngleCam

ENGINEERING JOURNALS



Latitude: 18.523108
Longitude: 74.574606
Altitude: 470.5±3 m
Accuracy: 20.0 m
Azimuth: 339° (N)
Pitch: -4.9° (0.8°)
Time: 10:37
Note: Drinking Water

Powered by AngleCam



DRINKING RO WATER

Water
PRINCIPAL
H.S.B.P.V.T.'S GROUP OF INSTITUTION'S
PARIKRAMA COE KASHTI



Hon. Shri. Babanrao Pachpute Vichardhara Trust's
Group of Institutions

Kashti, Tal - Shrigonda, Dist-Ahmednagar, Maharashtra - 414 701

Faculty of Engineering

Approved by AICTE, MS (New-Int)-Engg./2009/09, Dt. 15/06/09, Affiliated to Savitribai Phule Pune University



Latitude: 18.52311
 Longitude: 74.574657
 Elevation: 542.94±31 m
 Accuracy: 106.9 m
 Azimuth: 31° (NE)
 Pitch: -6.8°
 Time: 10:18

Powered by AngleCam

RO PURIFIER



GPS Map Camera



Google

Ahmednagar, Maharashtra, India
 GHFF+HRG, Ahmednagar, Maharashtra 414701, India
 Lat 18.525029°
 Long 74.572597°
 08/08/23 07:59 PM GMT +05:30



GPS Map Camera



Google

Ahmednagar, Maharashtra, India
 GHFF+HRG, Ahmednagar, Maharashtra 414701, India
 Lat 18.525029°
 Long 74.572597°
 08/08/23 07:58 PM GMT +05:30



GYMNASIUM

Water

PRINCIPAL
 H.S.B.P.V.T.'S GROUP OF INSTITUTION'S
 PARIKRAMA COE KASHTI



Hon. Shri. Babanrao Pachpute Vichardhara Trust's Group of Institutions

Kashti, Tal - Shrigonda, Dist-Ahmednagar, Maharashtra - 414 701

Faculty of Engineering

Approved by AICTE, MS (New-Int)-Engg./2009/09, Dt. 15/06/09, Affiliated to Savitribai Phule Pune University



HOSTEL



MESS

Water
PRINCIPAL
H.S.B.P.V.T.'S GROUP OF INSTITUTION'S
PARIKRAMA COE KASHTI



Hon. Shri. Babanrao Pachpute Vichardhara Trust's Group of Institutions

Kashti, Tal - Shrigonda, Dist-Ahmednagar, Maharashtra - 414 701

Faculty of Engineering

Approved by AICTE, MS (New-Int)-Engg./2009/09, Dt. 15/06/09, Affiliated to Savitribai Phule Pune University



Ahmednagar, Maharashtra, India
GHFF+HRG, Ahmednagar, Maharashtra 414701, India
Lat 18.524554°
Long 74.573093°
27/07/23 12:58 PM GMT +05:30



अहमदनगर, महाराष्ट्र, भारत
GHFG+M29, अहमदनगर, महाराष्ट्र 414701, भारत
Lat 18.524235°
Long 74.574198°
20/10/22 04:21 PM GMT +05:30



PLAYING GROUND

PRINCIPAL
H.S.B.P.V.T.'S GROUP OF INSTITUTION'S
PARIKRAMA COE KASHTI



Hon. Shri. Babanrao Pachpute Vichardhara Trust's Group of Institutions

Kashti, Tal - Shrigonda, Dist-Ahmednagar, Maharashtra - 414 701

Faculty of Engineering

Approved by AICTE, MS (New-Int)-Engg./2009/09, Dt. 15/06/09, Affiliated to Savitribai Phule Pune University



Latitude: 18.521702
Longitude: 74.578517
Elevation: 521.39±11 m
Accuracy: 32.2 m
Azimuth: 112° (E)
Pitch: 7.1°
Time: 10:29

Powered by AngleCam

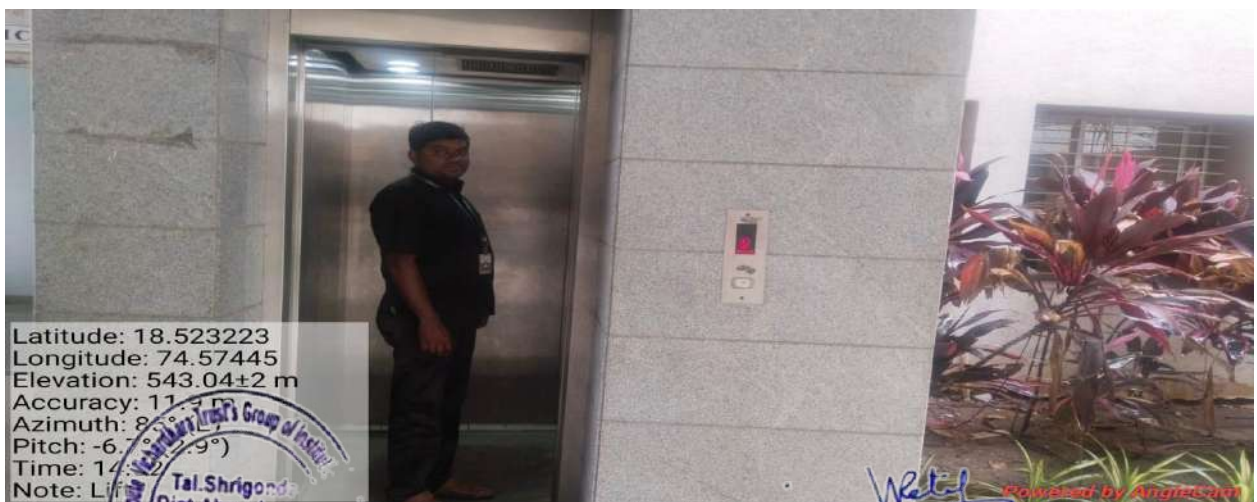
GENERATOR



Latitude: 18.52194
Longitude: 74.578278
Elevation: 518.31±15 m
Accuracy: 23.0 m
Azimuth: 162° (S)
Pitch: 12.6° (-13.6°)
Time: 10:29

Powered by AngleCam

TRANSFORMER



Latitude: 18.523223
Longitude: 74.57445
Elevation: 543.04±2 m
Accuracy: 11.9 m
Azimuth: 81.9° (S)
Pitch: -6.9°
Time: 10:29
Note: Lift

Powered by AngleCam



LIFT

PRINCIPAL
H.S.B.P.V.T.'S GROUP OF INSTITUTION'S
PARIKRAMA COE KASHTI



Hon. Shri. Babanrao Pachpute Vichardhara Trust's
Group of Institutions

Kashti, Tal - Shrigonda, Dist-Ahmednagar, Maharashtra - 414 701

Faculty of Engineering

Approved by AICTE, MS (New-Int)-Engg./2009/09, Dt. 15/06/09, Affiliated to Savitribai Phule Pune University



SOLAR



UPS



ENERGY SAVING SENSOR LIGHT



Watef
PRINCIPAL
 H.S.B.P.V.T.'S GROUP OF INSTITUTION'S
 PARIKRAMA COE KASHTI



Hon. Shri. Babanrao Pachpute Vichardhara Trust's Group of Institutions

Kashti, Tal - Shrigonda, Dist-Ahmednagar, Maharashtra - 414 701

Faculty of Engineering

Approved by AICTE, MS (New-Int)-Engg./2009/09, Dt. 15/06/09, Affiliated to Savitribai Phule Pune University



Latitude: 18.522686
Longitude: 74.580425
Elevation: 514.27±13 m
Accuracy: 10.4 m
Azimuth: 193° (S)
Pitch: 0.1°
Time: 10:35

Powered by AngleCam

TRANSPORT FACILITY



Latitude: 18.522675
Longitude: 74.580409
Elevation: 514.9±20 m
Accuracy: 26.6 m
Azimuth: 260° (W)
Pitch: -0.2°
Time: 10:34

Powered by AngleCam

PARKING SYSTEM



Latitude: 18.522749
Longitude: 74.582337
Elevation: 544.34±2 m
Accuracy: 25.0 m
Azimuth: 277° (W)
Pitch: 5.3°
Time: 13:51
Note: Union Bank

Powered by AngleCam



ATM

Water
PRINCIPAL
H.S.B.P.V.T.'S GROUP OF INSTITUTION'S
PARIKRAMA COE KASHTI



Hon. Shri. Babanrao Pachpute Vichardhara Trust's
Group of Institutions

Kashti, Tal - Shrigonda, Dist-Ahmednagar, Maharashtra - 414 701

Faculty of Engineering

Approved by AICTE, MS (New-Int)-Engg./2009/09, Dt. 15/06/09, Affiliated to Savitribai Phule Pune University



TPO CELL



TPO CABIN



Wetif
PRINCIPAL
H.S.B.P.V.T.'S GROUP OF INSTITUTION'S
PARIKRAMA COE KASHTI



Hon. Shri. Babanrao Pachpute Vichardhara Trust's
Group of Institutions

Kashti, Tal - Shrigonda, Dist-Ahmednagar, Maharashtra - 414 701

Faculty of Engineering

Approved by AICTE, MS (New-Int)-Engg./2009/09, Dt. 15/06/09, Affiliated to Savitribai Phule Pune University



Latitude: 18.524437
Longitude: 74.578622
Elevation: 541.73±22 m
Accuracy: 10.1 m
Azimuth: 56° (NE)
Pitch: 15.5°
Time: 15:13
Note: Staff Quarters

Powered by AngleCam

STAFF QUARTER



Latitude: 18.523774
Longitude: 74.574462
Elevation: 541.73±19 m
Accuracy: 48.2 m
Azimuth: 138° (SE)
Pitch: -5.3°
Time: 15:09
Note: Cafeteria

Powered by AngleCam

CAFETERIA



Watif
PRINCIPAL
H.S.B.P.V.T.'S GROUP OF INSTITUTION'S
PARIKRAMA COE KASHTI



Hon. Shri. Babanrao Pachpute Vichardhara Trust's Group of Institutions

Kashti, Tal - Shrigonda, Dist-Ahmednagar, Maharashtra - 414 701

Faculty of Engineering

Approved by AICTE, MS (New-Int)-Engg./2009/09, Dt. 15/06/09, Affiliated to Savitribai Phule Pune University

ENGINEERING WORKSHOP



Latitude: 18.522972
Longitude: 74.574097
Elevation: 519.76±7 m
Accuracy: 8.3 m
Azimuth: 170° (S)
Pitch: 15.3°
Time: 10:01
Note: Engineering Workshop

Powered by AngleCam



Latitude: 18.523035
Longitude: 74.574774
Elevation: 542.94±73 m
Accuracy: 133.8 m
Azimuth: 311° (NW)
Pitch: -2.5°
Time: 09:54
Note: Engineering Workshop

Powered by AngleCam



Wetif
PRINCIPAL
H.S.B.P.V.T.'S GROUP OF INSTITUTION'S
PARIKRAMA COE KASHTI



Hon. Shri. Babanrao Pachpute Vichardhara Trust's
Group of Institutions

Kashti, Tal - Shrigonda, Dist-Ahmednagar, Maharashtra - 414 701

Faculty of Engineering

Approved by AICTE, MS (New-Int)-Engg./2009/09, Dt. 15/06/09, Affiliated to Savitribai Phule Pune University

DEPARTMENT OF CIVIL ENGINEERING



TRANSPORTATION ENGINEERING LAB



GEOTECHNICAL ENGINEERING LAB



CONCRETE TECHNOLOGY LAB



Wetif
PRINCIPAL
H.S.B.P.V.T.'S GROUP OF INSTITUTION'S
PARIKRAMA COE KASHTI



Hon. Shri. Babanrao Pachpute Vichardhara Trust's Group of Institutions

Kashti, Tal - Shrigonda, Dist-Ahmednagar, Maharashtra - 414 701

Faculty of Engineering

Approved by AICTE, MS (New-Int)-Engg./2009/09, Dt. 15/06/09, Affiliated to Savitribai Phule Pune University



Latitude: 18.523002
Longitude: 74.574842
Elevation: 276.84±100 m
Accuracy: 60.4 m
Azimuth: 236° (SW)
Pitch: -5.8°
Time: 09:28
Note: Environmental Engineering Lab

Powered by AngleCam

ENVIRONMENTAL ENGINEERING LAB



Latitude: 18.523016
Longitude: 74.574833
Elevation: 276.84±34 m
Accuracy: 36.4 m
Azimuth: 305° (NW)
Pitch: -9.0°
Time: 09:36
Note: CAD Lab

Powered by AngleCam

CAD LAB



Latitude: 18.523005
Longitude: 74.57484
Elevation: 276.84±17 m
Accuracy: 92.9 m
Azimuth: 105° (E)
Pitch: -6.4°
Time: 09:33
Note: Fluid Mechanics Lab

Powered by AngleCam

FLUID MECHANICS LAB



Wati
PRINCIPAL
H.S.B.P.V.T.'S GROUP OF INSTITUTION'S
PARIKRAMA COE KASHTI



Hon. Shri. Babanrao Pachpute Vichardhara Trust's
Group of Institutions

Kashti, Tal - Shrigonda, Dist-Ahmednagar, Maharashtra - 414 701

Faculty of Engineering

Approved by AICTE, MS (New-Int)-Engg./2009/09, Dt. 15/06/09, Affiliated to Savitribai Phule Pune University



Latitude: 18.522715
Longitude: 74.573861
Elevation: 542.94±75 m
Accuracy: 116.3 m
Azimuth: 175° (S)
Pitch: -1.8° (-1.3°)
Time: 09:57
Note: MOS Lab

Powered by AngleCam



Latitude: 18.522589
Longitude: 74.573881
Elevation: 542.94±77 m
Accuracy: 41.8 m
Azimuth: 180° (S)
Pitch: -7.1° (-1.9°)
Time: 09:59
Note: MOS Lab

Powered by AngleCam

MOS LAB



Wetif
PRINCIPAL
H.S.B.P.V.T.'S GROUP OF INSTITUTION'S
PARIKRAMA COE KASHTI



Hon. Shri. Babanrao Pachpute Vichardhara Trust's Group of Institutions

Kashti, Tal - Shrigonda, Dist-Ahmednagar, Maharashtra - 414 701

Faculty of Engineering

Approved by AICTE, MS (New-Int)-Engg./2009/09, Dt. 15/06/09, Affiliated to Savitribai Phule Pune University

DEPARTMENT OF MECHANICAL ENGINEERING



Latitude: 18.533331
Longitude: 74.585687
Altitude: 204.4±2 m
Accuracy: 2900.0 m
Azimuth: 322° (NW)
Pitch: -8.7°
Time: 09:39
Note: Mechatronics Lab

Powered by AngliaCam

MECHATRONICS LAB



Latitude: 18.523012
Longitude: 74.575177
Elevation: 548.64±5 m
Accuracy: 24.3 m
Azimuth: 356° (N)
Pitch: -3.2° (0.8°)
Time: 09:43
Note: Drawing Hall

Powered by AngliaCam

DRAWING HALL



Latitude: 18.522965
Longitude: 74.57510 m
Elevation: 548.64±1 m
Accuracy: 31.0 m
Azimuth: 106° (E)
Pitch: 0.2° (2.2°)
Time: 09:46
Note: Heat Transf

Powered by AngliaCam



HEAT TRANSFER LAB

PRINCIPAL
H.S.B.P.V.T.'S GROUP OF INSTITUTION'S
PARIKRAMA COE KASHTI



Hon. Shri. Babanrao Pachpute Vichardhara Trust's Group of Institutions

Kashti, Tal - Shrigonda, Dist-Ahmednagar, Maharashtra - 414 701

Faculty of Engineering

Approved by AICTE, MS (New-Int)-Engg./2009/09, Dt. 15/06/09, Affiliated to Savitribai Phule Pune University



APPLIED THERMODYNAMICS LAB



DYNAMICS OF MACHINE LAB



IC ENGINE LAB



Watef
PRINCIPAL
H.S.B.P.V.T.'S GROUP OF INSTITUTION'S
PARIKRAMA COE KASHTI



Hon. Shri. Babanrao Pachpute Vichardhara Trust's Group of Institutions

Kashti, Tal - Shrigonda, Dist-Ahmednagar, Maharashtra - 414 701

Faculty of Engineering

Approved by AICTE, MS (New-Int)-Engg./2009/09, Dt. 15/06/09, Affiliated to Savitribai Phule Pune University

DEPARTMENT OF ELECTRICAL ENGINEERING



Latitude: 18.523269
Longitude: 74.574274
Elevation: 541.93±4 m
Accuracy: 35.2 m
Azimuth: 346° (N)
Pitch: -4.5° (-2.6°)
Time: 10:04
Note: Electrical Power System Lab

Powered by AngleCam

ELECTRICAL POWER SYSTEM LAB



Latitude: 18.523262
Longitude: 74.574275
Altitude: 469.5±3 m
Accuracy: 22.9 m
Azimuth: 308° (NW)
Pitch: 2.8° (-1.6°)
Time: 10:05
Note: Electrical Machine Lab

Powered by AngleCam

ELECTRICAL MACHINE LAB



Latitude: 18.523244
Longitude: 74.574281
Altitude: 470.6±1 m
Accuracy: 20.0 m
Azimuth: 36° (NE)
Pitch: 0.1° (-1.0°)
Time: 10:07
Note: Electrical MI Lab

Powered by AngleCam



ELECTRICAL MI LAB

W. Kelif
PRINCIPAL
H.S.B.P.V.T.'S GROUP OF INSTITUTION'S
PARIKRAMA COE KASHTI



Hon. Shri. Babanrao Pachpute Vichardhara Trust's Group of Institutions

Kashti, Tal - Shrigonda, Dist-Ahmednagar, Maharashtra - 414 701

Faculty of Engineering

Approved by AICTE, MS (New-Int)-Engg./2009/09, Dt. 15/06/09, Affiliated to Savitribai Phule Pune University



Latitude: 18.522978
Longitude: 74.575016
Elevation: 540.74±15 m
Accuracy: 68.5 m
Azimuth: 299° (NW)
Pitch: -9.4° (-2.8°)
Time: 11:42
Note: ADE LAB

Powered by AngleCam

ADE LAB



Latitude: 18.523162
Longitude: 74.574973
Elevation: 540.74±7 m
Accuracy: 48.9 m
Azimuth: 355° (N)
Pitch: -7.4° (-1.3°)
Time: 11:40
Note: PECD LAB

Powered by AngleCam

PECD LAB



Latitude: 18.523119
Longitude: 74.575014
Elevation: 540.74±15 m
Accuracy: 64.8 m
Azimuth: 2° (N)
Pitch: -11.9° (-2.6°)
Time: 11:42



NETWORK LAB

Watif
PRINCIPAL
H.S.B.P.V.T.'S GROUP OF INSTITUTION'S
PARIKRAMA COE KASHTI



Hon. Shri. Babanrao Pachpute Vichardhara Trust's Group of Institutions

Kashti, Tal - Shrigonda, Dist-Ahmednagar, Maharashtra - 414 701

Faculty of Engineering

Approved by AICTE, MS (New-Int)-Engg./2009/09, Dt. 15/06/09, Affiliated to Savitribai Phule Pune University

DEPARTMENT OF COMPUTER ENGINEERING



Latitude: 18.523363
Longitude: 74.574462
Elevation: 542.13±2 m
Accuracy: 29.0 m
Azimuth: 130° (SE)
Pitch: -5.9°
Time: 10:43
Note: Programming Lab 1

Powered by AngleCam

PROGRAMMING LAB 1



Latitude: 18.523329
Longitude: 74.57447
Elevation: 542.13±2 m
Accuracy: 14.2 m
Azimuth: 39° (NE)
Pitch: -2.9° (-0.7°)
Time: 10:44
Note: Programming Lab2

Powered by AngleCam

PROGRAMMING LAB 2



Latitude: 18.523368
Longitude: 74.574457
Elevation: 542.13±2 m
Accuracy: 13.1 m
Azimuth: 10° (N)
Pitch: -1.4° (-1.6°)
Time: 10:45
Note: Programm

Powered by AngleCam



PROGRAMMING LAB 3

Wetif
PRINCIPAL
H.S.B.P.V.T.'S GROUP OF INSTITUTION'S
PARIKRAMA COE KASHTI



Hon. Shri. Babanrao Pachpute Vichardhara Trust's Group of Institutions

Kashti, Tal - Shrigonda, Dist-Ahmednagar, Maharashtra - 414 701

Faculty of Engineering

Approved by AICTE, MS (New-Int)-Engg./2009/09, Dt. 15/06/09, Affiliated to Savitribai Phule Pune University



Latitude: 18.523267
Longitude: 74.574257
Elevation: 541.94±3 m
Accuracy: 26.9 m
Azimuth: 18° (N)
Pitch: 3.6°
Time: 10:47
Note: Programming Lab 4

Powered by AngleCam

PROGRAMMING LAB 4



Latitude: 18.523236
Longitude: 74.574373
Altitude: 470.7±3 m
Accuracy: 30.9 m
Azimuth: 354° (N)
Pitch: -6.8° (2.8°)
Time: 10:49
Note: Programming Lab 5

Powered by AngleCam

PROGRAMMING LAB 5



Latitude: 18.523255
Longitude: 74.574293
Elevation: 541.94±3 m
Accuracy: 26.9 m
Azimuth: 18° (N)
Pitch: -9.2° (6°)
Time: 10:55
Note: Programming Lab 6

Powered by AngleCam



PROGRAMMING LAB 6
PRINCIPAL
H.S.B.P.V.T.'S GROUP OF INSTITUTION'S
PARIKRAMA COE KASHTI



Hon. Shri. Babanrao Pachpute Vichardhara Trust's Group of Institutions

Kashti, Tal - Shrigonda, Dist-Ahmednagar, Maharashtra - 414 701

Faculty of Engineering

Approved by AICTE, MS (New-Int)-Engg./2009/09, Dt. 15/06/09, Affiliated to Savitribai Phule Pune University

DEPARTMENT OF ELECTRONICS & TELECOMMUNICATION ENGINEERING



Latitude: 18.523104
Longitude: 74.575116
Elevation: 548.64±10 m
Accuracy: 80.7 m
Azimuth: 355° (N)
Pitch: -3.0° (1.9°)
Time: 11:03
Note: EFT Lab

Powered by AngleCam

MICROCONTROLLER LAB



Latitude: 18.523192
Longitude: 74.575003
Elevation: 542.14±14 m
Accuracy: 110.0 m
Azimuth: 355° (N)
Pitch: -4.0° (-1.3°)
Time: 11:03
Note: ELC Lab

Powered by AngleCam

EMBEDDED & IOT LAB



Latitude: 18.52303
Longitude: 74.575112
Elevation: 548.64±9 m
Accuracy: 43.5 m
Azimuth: 276° (W)
Pitch: -3.9° (2.2°)
Time: 11:05
Note: Communication

Powered by AngleCam



COMMUNICATION LAB 3

PRINCIPAL
H.S.B.P.V.T.'S GROUP OF INSTITUTION'S
PARIKRAMA COE KASHTI



Hon. Shri. Babanrao Pachpute Vichardhara Trust's
Group of Institutions

Kashti, Tal - Shrigonda, Dist-Ahmednagar, Maharashtra - 414 701

Faculty of Engineering

Approved by AICTE, MS (New-Int)-Engg./2009/09, Dt. 15/06/09, Affiliated to Savitribai Phule Pune University



Latitude: 18.523157
Longitude: 74.575109
Elevation: 548.64±6 m
Accuracy: 32.4 m
Azimuth: 90° (E)
Pitch: -1.7° (3.4°)
Time: 11:06
Note: Network and Power Lab

Powered by AngleCam

NETWORK & POWER LAB



Latitude: 18.523025
Longitude: 74.574866
Elevation: 280.14±100 m
Accuracy: 50.8 m
Azimuth: 217° (SW)
Pitch: -12.1° (3.5°)
Time: 11:08
Note: DSP Lab

Powered by AngleCam

SOFTWARE LAB



Latitude: 18.523385
Longitude: 74.574795
Elevation: 542.24±6 m
Accuracy: 14.3 m
Azimuth: 166° (S)
Pitch: -7.3° (2.4°)
Time: 11:09
Note: Commun

Powered by AngleCam



COMMUNICATION LAB 1

PRINCIPAL
H.S.B.P.V.T.'S GROUP OF INSTITUTION'S
PARIKRAMA COE KASHTI



Hon. Shri. Babanrao Pachpute Vichardhara Trust's Group of Institutions

Kashti, Tal - Shrigonda, Dist-Ahmednagar, Maharashtra - 414 701

Faculty of Engineering

Approved by AICTE, MS (New-Int)-Engg./2009/09, Dt. 15/06/09, Affiliated to Savitribai Phule Pune University



Latitude: 18.523331
Longitude: 74.57481
Elevation: 542.24±100 m
Accuracy: 25.3 m
Azimuth: 115° (SE)
Pitch: -7.8° (-1.0°)
Time: 11:11
Note: Communication Lab 2

Powered by AngleCam

COMMUNICATION LAB 2



Latitude: 18.522993
Longitude: 74.574772
Elevation: 276.84±100 m
Accuracy: 66.1 m
Azimuth: 96° (E)
Pitch: -3.9° (-0.6°)
Time: 10:20
Note: Chemistry Lab

Powered by AngleCam

CHEMISTRY LAB



Latitude: 18.522993
Longitude: 74.57477
Elevation: 276.84±100 m
Accuracy: 193.4 m
Azimuth: 134° (SE)
Pitch: -4.1° (-0.9°)
Time: 10:19
Note: Physics Lab

Powered by AngleCam



PHYSICS LAB

Wetif
PRINCIPAL
H.S.B.P.V.T.'S GROUP OF INSTITUTION'S
PARIKRAMA COE KASHTI



Hon. Shri. Babanrao Pachpute Vichardhara Trust's Group of Institutions

Kashti, Tal - Shrigonda, Dist-Ahmednagar, Maharashtra - 414 701

Faculty of Engineering

Approved by AICTE, MS (New-Int)-Engg./2009/09, Dt. 15/06/09, Affiliated to Savitribai Phule Pune University

OFFICE



Latitude: 18.523177
Longitude: 74.574274
Elevation: 543.04±2 m
Accuracy: 17.9 m
Azimuth: 309° (NW)
Pitch: -3.8° (0.9°)
Time: 10:09
Note: Engineering Office

Powered by AngleCam



Latitude: 18.523186
Longitude: 74.574285
Elevation: 541.44±3 m
Accuracy: 53.6 m
Azimuth: 144° (SE)
Pitch: -5.6°
Time: 10:10
Note: Conference Room

Powered by AngleCam

CONFERENCE ROOM



Watil
PRINCIPAL
H.S.B.P.V.T.'S GROUP OF INSTITUTION'S
PARIKRAMA COE KASHTI



Hon. Shri. Babanrao Pachpute Vichardhara Trust's Group of Institutions

Kashti, Tal - Shrigonda, Dist-Ahmednagar, Maharashtra - 414 701

Faculty of Engineering

Approved by AICTE, MS (New-Int)-Engg./2009/09, Dt. 15/06/09, Affiliated to Savitribai Phule Pune University



Latitude: 18.52321
Longitude: 74.57427
Elevation: 543.04±9 m
Accuracy: 470.3 m
Azimuth: 158° (S)
Pitch: -5.9°
Time: 10:11
Note: Principal Cabin

Powered by AngleCam

PRINCIPAL CABIN



Latitude: 18.523153
Longitude: 74.574271
Elevation: 543.04±5 m
Accuracy: 57.4 m
Azimuth: 235° (SW)
Pitch: -12.7° (-3.4°)
Time: 10:12
Note: CAO Cabin

Powered by AngleCam

CAO CABIN



Wetif
PRINCIPAL
H.S.B.P.V.T.'S GROUP OF INSTITUTION'S
PARIKRAMA COE KASHTI



parikrama
Revolution in Education

Hon. Shri. Babanrao Pachpute Vichardhara Trust's Group of Institutions

Kashti, Tal - Shrigonda, Dist-Ahmednagar, Maharashtra - 414 701

Faculty of Engineering

Approved by AICTE, MS (New-Int)-Engg./2009/09, Dt. 15/06/09, Affiliated to Savitribai Phule Pune University

CLASSROOM



Latitude: 18.522983
Longitude: 74.574859
Elevation: 276.84±27 m
Accuracy: 23.6 m
Azimuth: 354° (N)
Pitch: -6.2° (-0.8°)
Time: 10:19
Note: Class Room



Latitude: 18.523107
Longitude: 74.57507
Elevation: 548.54±7 m
Accuracy: 52.9 m
Azimuth: 28° (NE)
Pitch: -11.0°
Time: 10:27
Note: Tutorial Room



Latitude: 18.522998
Longitude: 74.574752
Elevation: 542.44±14 m
Accuracy: 78.4 m
Azimuth: 62° (NE)
Pitch: -1.8°
Time: 10:12
Note: Class Room



PRINCIPAL
H.S.B.P.V.T.'S GROUP OF INSTITUTION'S
PARIKRAMA COE KASHTI



Hon. Shri. Babanrao Pachpute Vichardhara Trust's
Group of Institutions

Kashti, Tal - Shrigonda, Dist-Ahmednagar, Maharashtra - 414 701

Faculty of Engineering

Approved by AICTE, MS (New-Int)-Engg./2009/09, Dt. 15/06/09, Affiliated to Savitribai Phule Pune University





Hon. Shri. Babanrao Pachpute Vichardhara Trust's Group of Institutions

Kashti, Tal - Shrigonda, Dist-Ahmednagar, Maharashtra - 414 701

Faculty of Engineering

Approved by AICTE, MS (New-Int)-Engg./2009/09, Dt. 15/06/09, Affiliated to Savitribai Phule Pune University

TUTORIAL ROOM



Latitude: 18.522982
Longitude: 74.57485
Altitude: 204.4±35 m
Accuracy: 98.4 m
Azimuth: 149° (SE)
Pitch: -5.2° (-1.1°)
Time: 12:20
Note: Tutorial Room

Powered by AngleCam



Latitude: 18.523107
Longitude: 74.57507
Elevation: 548.54±7 m
Accuracy: 52.9 m
Azimuth: 28° (NE)
Pitch: -11.0°
Time: 10:27
Note: Tutorial Room



Netel

Powered by AngleCam

PRINCIPAL
H.S.B.P.V.T.'S GROUP OF INSTITUTION'S
PARIKRAMA COE KASHTI



parikrama
Revolution in Education

Hon. Shri. Babanrao Pachpute Vichardhara Trust's Group of Institutions

Kashti, Tal - Shrigonda, Dist-Ahmednagar, Maharashtra - 414 701

Faculty of Engineering

Approved by AICTE, MS (New-Int)-Engg./2009/09, Dt. 15/06/09, Affiliated to Savitribai Phule Pune University

TUTORIAL ROOM



Latitude: 18.522979
Longitude: 74.574854
Altitude: 204.4±27 m
Accuracy: 92.9 m
Azimuth: 294° (NW)
Pitch: -6.6° (-1.6°)
Time: 12:20
Note: Tutorial Room

Powered by AngleCam



Latitude: 18.522964
Longitude: 74.574863
Elevation: 276.84±50 m
Accuracy: 142.5 m
Azimuth: 299° (NW)
Pitch: -5.7°
Time: 12:19
Note: Tutorial Room

Powered by AngleCam



Wetel
PRINCIPAL
H.S.B.P.V.T.'S GROUP OF INSTITUTION'S
PARIKRAMA COE KASHTI



Hon. Shri. Babanrao Pachpute Vichardhara Trust's
Group of Institutions

Kashti, Tal - Shrigonda, Dist-Ahmednagar, Maharashtra - 414 701

Faculty of Engineering

Approved by AICTE, MS (New-Int)-Engg./2009/09, Dt. 15/06/09, Affiliated to Savitribai Phule Pune University

YOGA DAY CELEBRATION



Netil
PRINCIPAL
H.S.B.P.V.T.'S GROUP OF INSTITUTION'S
PARIKRAMA COE KASHTI



parikrama
Revolution in Education

Hon. Shri. Babanrao Pachpute Vichardhara Trust's

Group of Institutions

Kashti, Tal - Shrigonda, Dist-Ahmednagar, Maharashtra - 414 701

Faculty of Engineering

Approved by AICTE, MS (New-Int)-Engg./2009/09, Dt. 15/06/09, Affiliated to Savitribai Phule Pune University



PRINCIPAL
H.S.B.P.V.T.'S GROUP OF INSTITUTION'S
PARIKRAMA COE KASHTI



Hon. Shri. Babanrao Pachpute Vichardhara Trust's Group of Institutions

Kashti, Tal - Shrigonda, Dist-Ahmednagar, Maharashtra - 414 701

Faculty of Engineering

Approved by AICTE, MS (New-Int)-Engg./2009/09, Dt. 15/06/09, Affiliated to Savitribai Phule Pune University

SPORTS ACTIVITY



ANNUAL SPORTS MEET KABADDI (BOYS) THROW EVENT



ANNUAL SPORTS CHESS COMPETITION



ANNUAL SPORTS MEET CHESS COMPETITION (BOYS)



Wetif
PRINCIPAL
H.S.B.P.V.T.'S GROUP OF INSTITUTION'S
PARIKRAMA COE KASHTI



Hon. Shri. Babanrao Pachpute Vichardhara Trust's Group of Institutions

Kashti, Tal - Shrigonda, Dist-Ahmednagar, Maharashtra - 414 701

Faculty of Engineering

Approved by AICTE, MS (New-Int)-Engg./2009/09, Dt. 15/06/09, Affiliated to Savitribai Phule Pune University



ATHELETICS EVENT COMPETITION



Wetif
PRINCIPAL
H.S.B.P.V.T.'S GROUP OF INSTITUTION'S
PARIKRAMA COE KASHTI



Hon. Shri. Babanrao Pachpute Vichardhara Trust's
Group of Institutions

Kashti, Tal - Shrigonda, Dist-Ahmednagar, Maharashtra - 414 701

Faculty of Engineering

Approved by AICTE, MS (New-Int)-Engg./2009/09, Dt. 15/06/09, Affiliated to Savitribai Phule Pune University



ANNUAL SPORTS MEET VOLLEYBALL EVENT



CRICKET EVENT



Watif
PRINCIPAL
H.S.B.P.V.T.'S GROUP OF INSTITUTION'S
PARIKRAMA COE KASHTI



Hon. Shri. Babanrao Pachpute Vichardhara Trust's
Group of Institutions

Kashti, Tal - Shrigonda, Dist-Ahmednagar, Maharashtra - 414 701

Faculty of Engineering

Approved by AICTE, MS (New-Int)-Engg./2009/09, Dt. 15/06/09, Affiliated to Savitribai Phule Pune University

CULTURAL ACTIVITY

Dance Performance



Wate
PRINCIPAL
H.S.B.P.V.T.'S GROUP OF INSTITUTION'S
PARIKRAMA COE KASHTI



Hon. Shri. Babanrao Pachpute Vichardhara Trust's ग्रुप ऑफ इन्स्टिट्यूट्स

Kashti, Tal - Shrigonda, Dist-Ahmednagar, Maharashtra - 414 701

Faculty of Engineering

Approved by AICTE, MS (New-Int)-Engg./2009/09, Dt. 15/06/09, Affiliated to Savitribai Phule Pune University



BOLLYWOOD DAY COMPETITION



TRADITIONAL DAY



Wetif
PRINCIPAL
H.S.B.P.V.T.'S GROUP OF INSTITUTION'S
PARIKRAMA COE KASHTI



Hon. Shri. Babanrao Pachpute Vichardhara Trust's Group of Institutions

Kashti, Tal - Shrigonda, Dist-Ahmednagar, Maharashtra - 414 701

Faculty of Engineering

Approved by AICTE, MS (New-Int)-Engg./2009/09, Dt. 15/06/09, Affiliated to Savitribai Phule Pune University



ANNUAL SOCIAL GATHERING



PRINCIPAL
H.S.B.P.V.T.'S GROUP OF INSTITUTION'S
PARIKRAMA COE KASHTI



parikrama
Revolution in Education

Hon. Shri. Babanrao Pachpute Vichardhara Trust's Group of Institutions

Kashti, Tal - Shrigonda, Dist-Ahmednagar, Maharashtra - 414 701

Faculty of Engineering

Approved by AICTE, MS (New-Int)-Engg./2009/09, Dt. 15/06/09, Affiliated to Savitribai Phule Pune University



Wetif
PRINCIPAL
H.S.B.P.V.T.'S GROUP OF INSTITUTION'S
PARIKRAMA COE KASHTI



parikrama
Revolution in Education

Hon. Shri. Babanrao Pachpute Vichardhara Trust's

Group of Institutions

Kashti, Tal - Shrigonda, Dist-Ahmednagar, Maharashtra - 414 701

Faculty of Engineering

Approved by AICTE, MS (New-Int)-Engg./2009/09, Dt. 15/06/09, Affiliated to Savitribai Phule Pune University

DAHIHANDI CELEBRATION



PRINCIPAL
H.S.B.P.V.T.'S GROUP OF INSTITUTION'S
PARIKRAMA COE KASHTI



Hon. Shri. Babanrao Pachpute Vichardhara Trust's
ग्रुप ऑफ़ इंस्टीट्यूट्स

Kashti, Tal - Shrigonda, Dist-Ahmednagar, Maharashtra - 414 701

Faculty of Engineering

Approved by AICTE, MS (New-Int)-Engg./2009/09, Dt. 15/06/09, Affiliated to Savitribai Phule Pune University

RANGOLI COMPETITION



2019-1-2 12:58



2019-1-2 13:00



Wetif
PRINCIPAL
H.S.B.P.V.T.'S GROUP OF INSTITUTION'S
PARIKRAMA COE KASHTI